

DBH Antibody (N-term P42)
Affinity Purified Rabbit Polyclonal Antibody (Pab)
Catalog # AP11226A

Specification

DBH Antibody (N-term P42) - Product Information

Application	WB, IF, E
Primary Accession	P09172
Other Accession	NP_000778
Reactivity	Human, Mouse, Rat
Host	Rabbit
Clonality	Polyclonal
Isotype	Rabbit IgG
Antigen Region	27-56

DBH Antibody (N-term P42) - Additional Information

Gene ID 1621

Other Names

Dopamine beta-hydroxylase, Dopamine beta-monooxygenase, Soluble dopamine beta-hydroxylase, DBH

Target/Specificity

This DBH antibody is generated from rabbits immunized with a KLH conjugated synthetic peptide between 27-56 amino acids from the N-terminal region of human DBH.

Dilution

WB~~1:2000

IF~~1:25

E~~Use at an assay dependent concentration.

Format

Purified polyclonal antibody supplied in PBS with 0.09% (W/V) sodium azide. This antibody is purified through a protein A column, followed by peptide affinity purification.

Storage

Maintain refrigerated at 2-8°C for up to 2 weeks. For long term storage store at -20°C in small aliquots to prevent freeze-thaw cycles.

Precautions

DBH Antibody (N-term P42) is for research use only and not for use in diagnostic or therapeutic procedures.

DBH Antibody (N-term P42) - Protein Information

Name DBH

Function Catalyzes the hydroxylation of dopamine to noradrenaline (also known as norepinephrine), and is thus vital for regulation of these neurotransmitters.

Cellular Location

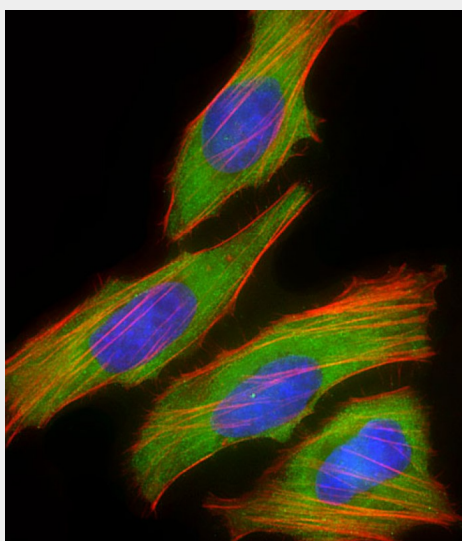
[Soluble dopamine beta-hydroxylase]: Cytoplasmic vesicle, secretory vesicle lumen Cytoplasmic vesicle, secretory vesicle, chromaffin granule lumen. Secreted

DBH Antibody (N-term P42) - Protocols

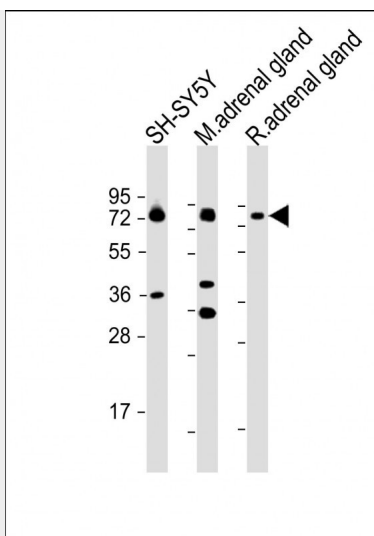
Provided below are standard protocols that you may find useful for product applications.

- [Western Blot](#)
- [Blocking Peptides](#)
- [Dot Blot](#)
- [Immunohistochemistry](#)
- [Immunofluorescence](#)
- [Immunoprecipitation](#)
- [Flow Cytometry](#)
- [Cell Culture](#)

DBH Antibody (N-term P42) - Images



Immunofluorescent analysis of 4% paraformaldehyde-fixed, 0.1% Triton X-100 permeabilized HeLa (human cervical epithelial adenocarcinoma cell line) cells labeling DBH with AP11226a at 1/25 dilution, followed by Dylight® 488-conjugated goat anti-rabbit IgG (NK179883) secondary antibody at 1/200 dilution (green). Immunofluorescence image showing cytoplasm and weak nucleus staining on HeLa cell line. Cytoplasmic actin is detected with Dylight® 554 Phalloidin (PD18466410) at 1/100 dilution (red). The nuclear counter stain is DAPI (blue).



All lanes : Anti-DBH Antibody (N-term P42) at 1:2000 dilution Lane 1: SH-SY5Y whole cell lysate Lane 2: mouse adrenal gland lysate Lane 3: rat adrenal gland lysate Lysates/proteins at 20 µg per lane. Secondary Goat Anti-Rabbit IgG, (H+L), Peroxidase conjugated at 1/10000 dilution. Predicted band size : 69 kDa Blocking/Dilution buffer: 5% NFDM/TBST.

DBH Antibody (N-term P42) - Background

The protein encoded by this gene is an oxidoreductase belonging to the copper type II, ascorbate-dependent monooxygenase family. It is present in the synaptic vesicles of postganglionic sympathetic neurons and converts dopamine to norepinephrine. It exists in both soluble and membrane-bound forms, depending on the absence or presence, respectively, of a signal peptide. [provided by RefSeq].

DBH Antibody (N-term P42) - References

Fernandez-Castillo, N., et al. Psychiatr. Genet. 20(6):317-320(2010)
Bailey, S.D., et al. Diabetes Care 33(10):2250-2253(2010)
Ruano, G., et al. Pharmacogenomics 11(7):959-971(2010)
Punia, S., et al. Pharmacogenet. Genomics 20(7):435-441(2010)
Pinheiro, A.P., et al. Am. J. Med. Genet. B Neuropsychiatr. Genet. 153B (5), 1070-1080 (2010) :

DBH Antibody (N-term P42) - Citations

- [Generating trunk neural crest from human pluripotent stem cells.](#)